



## VENICE

### EURO COLLECTION

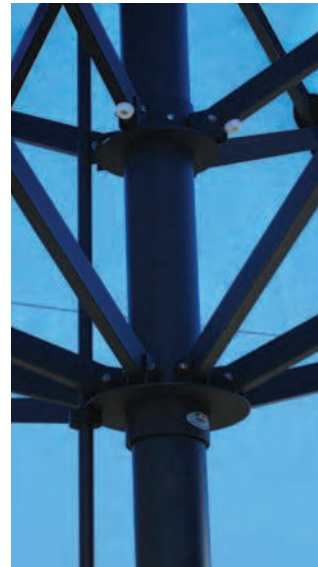
This large scale umbrella is available in two sizes - 16' and 20' squares - that provide shade to either 256 or 400 square feet, respectively. Canopies are manufactured with double, sewn-in vents to provide excellent wind control. The heavy duty base affords a stable and complementary foundation to this imposing shade structure.

- Telescopic opening and closing system with lift rod
- 8 rectangular aluminum ribs
- Carbon powder coated finished aluminum and steel structure with nylon accessories
- Steel cross base structure for (4) 19"x 19" concrete filled, molded fiberglass tiles with handles
- Double, sewn-in vent with storage ties standard
- Canopies are made of furniture grade, solution dyed acrylic. See fabric selections on pages 47-51. Tops are also available in COM.
- Custom top options include valance, alternating panels, banding and logos. See page 33 and 35.
- Umbrella and Base sold as a set

## BASE PLATE



## HUB DETAIL



SIZE/ SHAPE	MODEL #	FINISH COLOR	CENTER POST	RIBS	HEIGHT	WEIGHT
16' Sq	16SQVTPCR	Carbon	4" diam	Aluminum 13/16" x 1 9/16"	189"	810 lbs
20' Sq	20SQVTPCR		4" diam	Aluminum 13/16" x 1 9/16"	213"	840 lbs