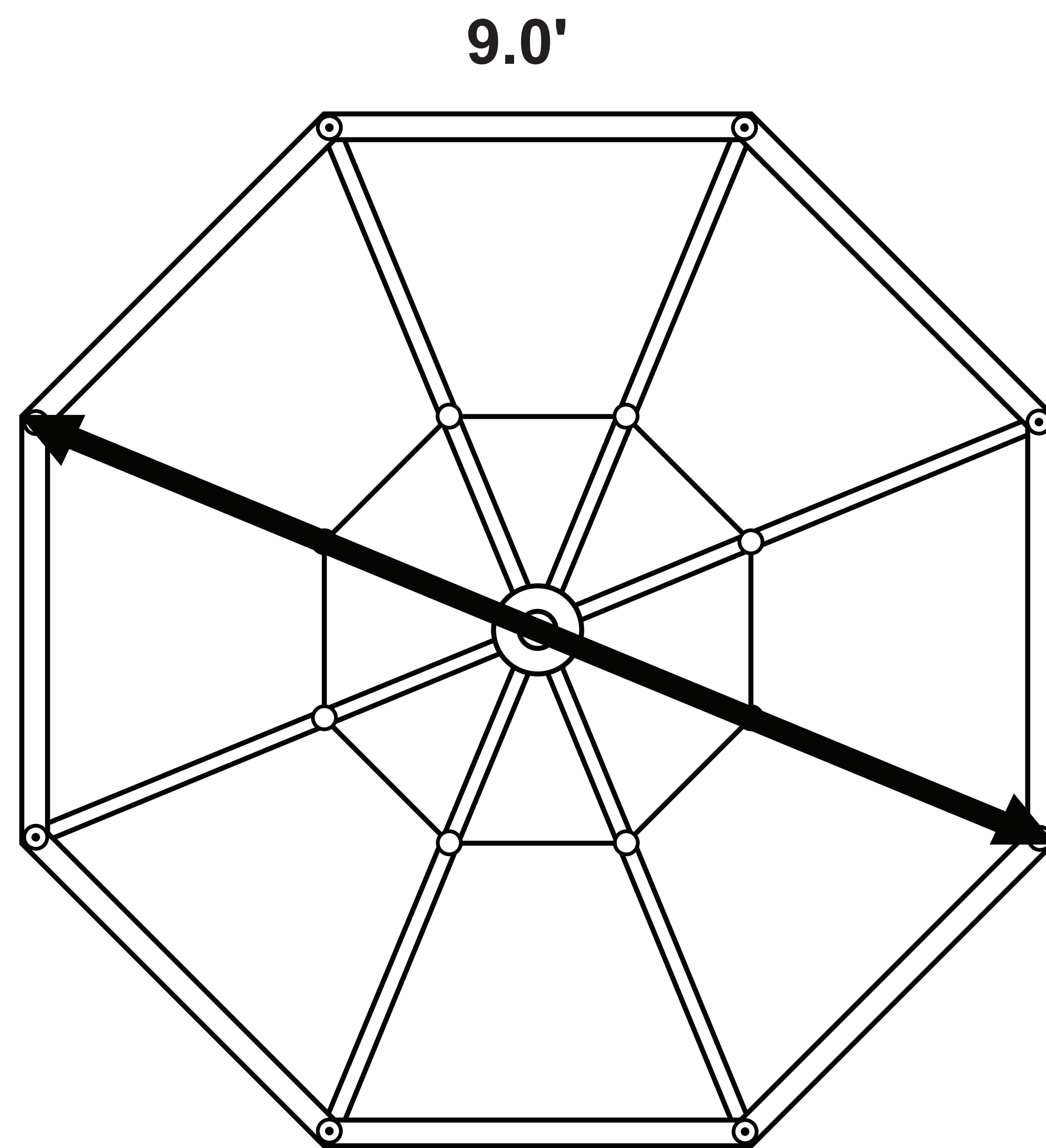
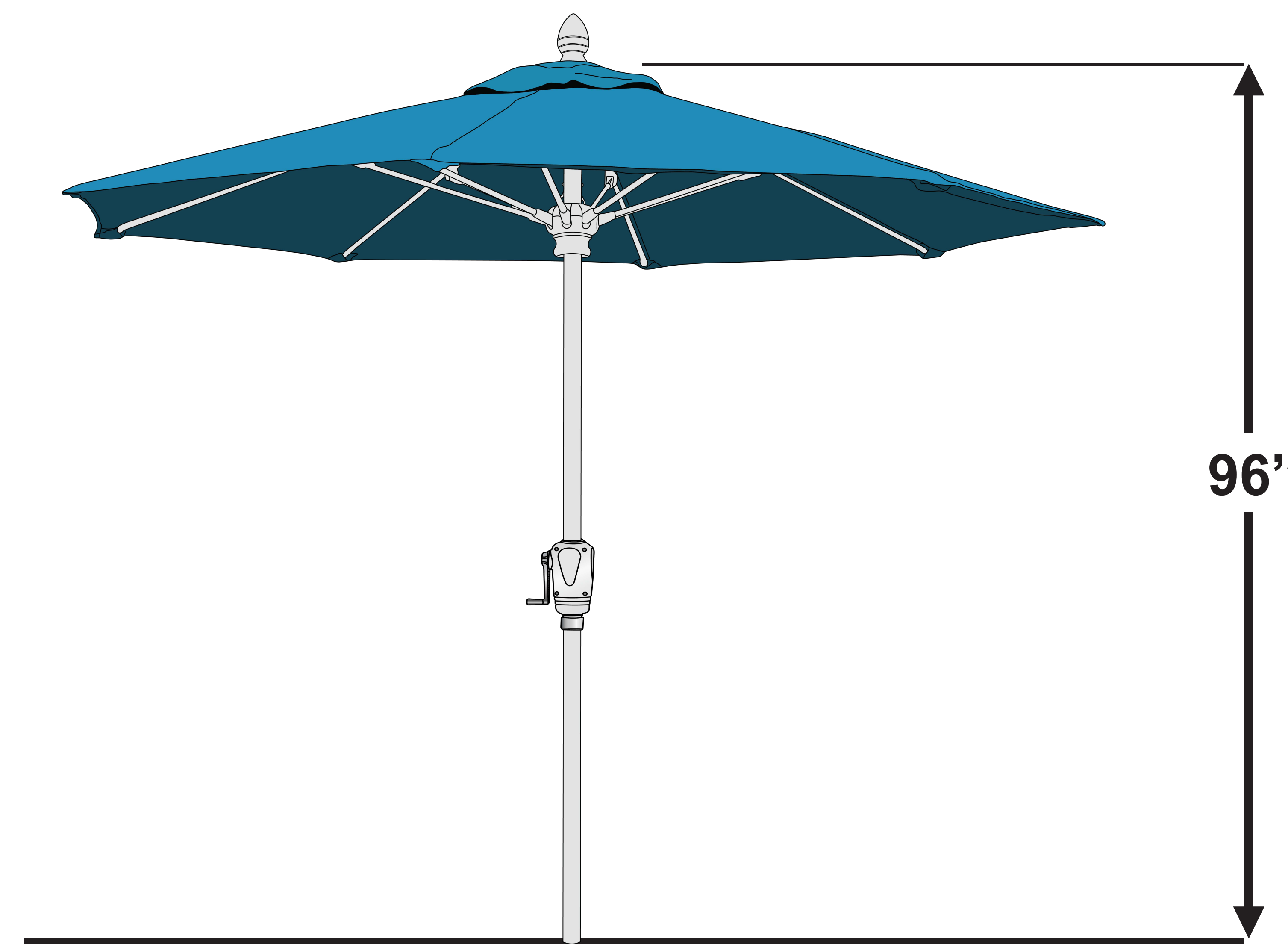


PLAN VIEW

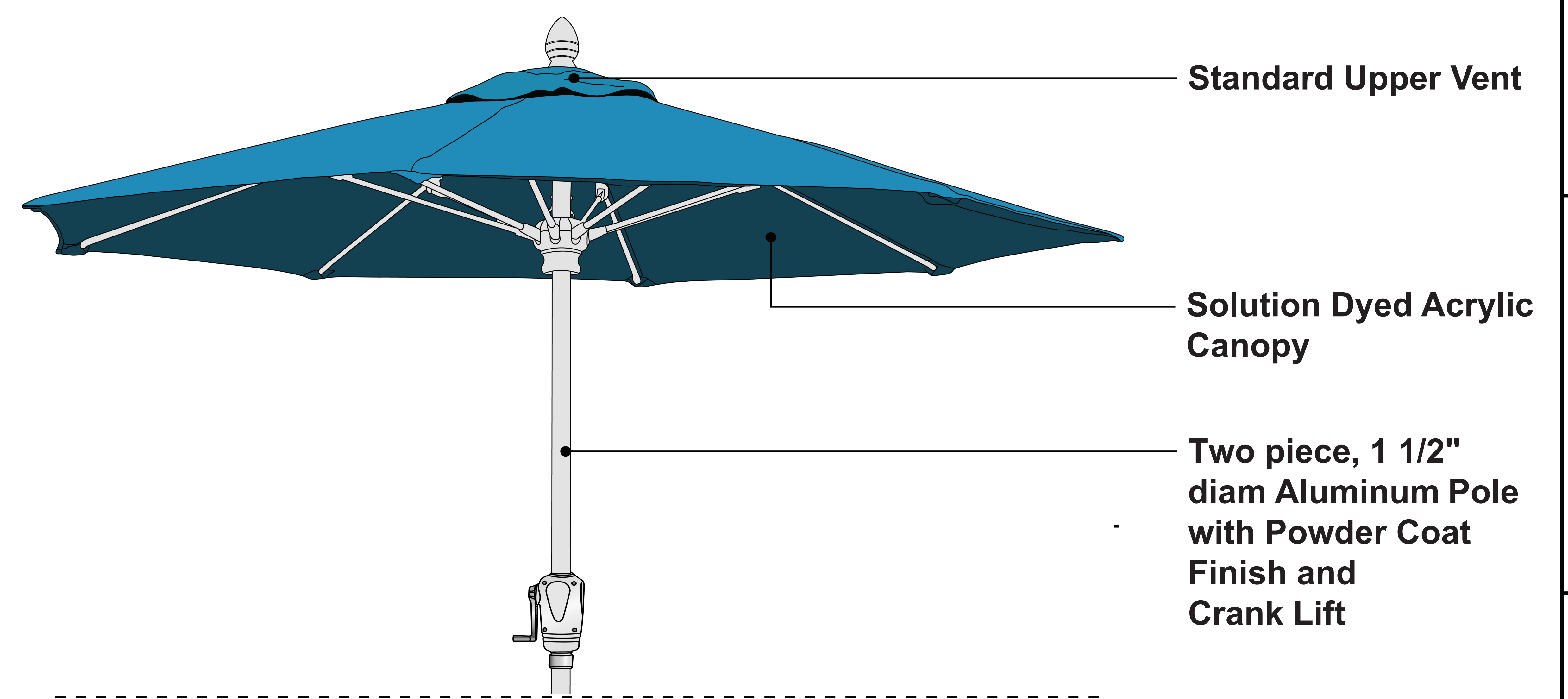


- **9' OCTAGON**
- **FIBERGLASS RIBS 1/2" DIAM**
- **ALUMINUM POLE 1 1/2" DIAM**

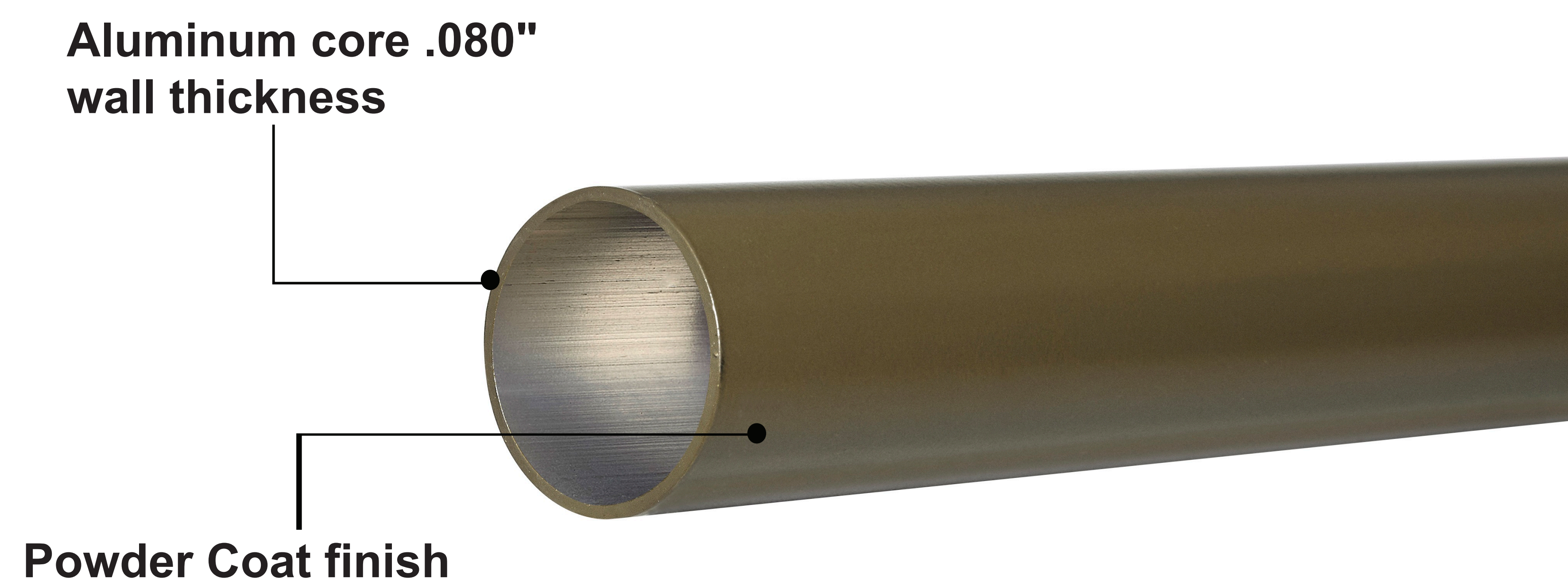
FRONT ELEVATION



COMPONENTS

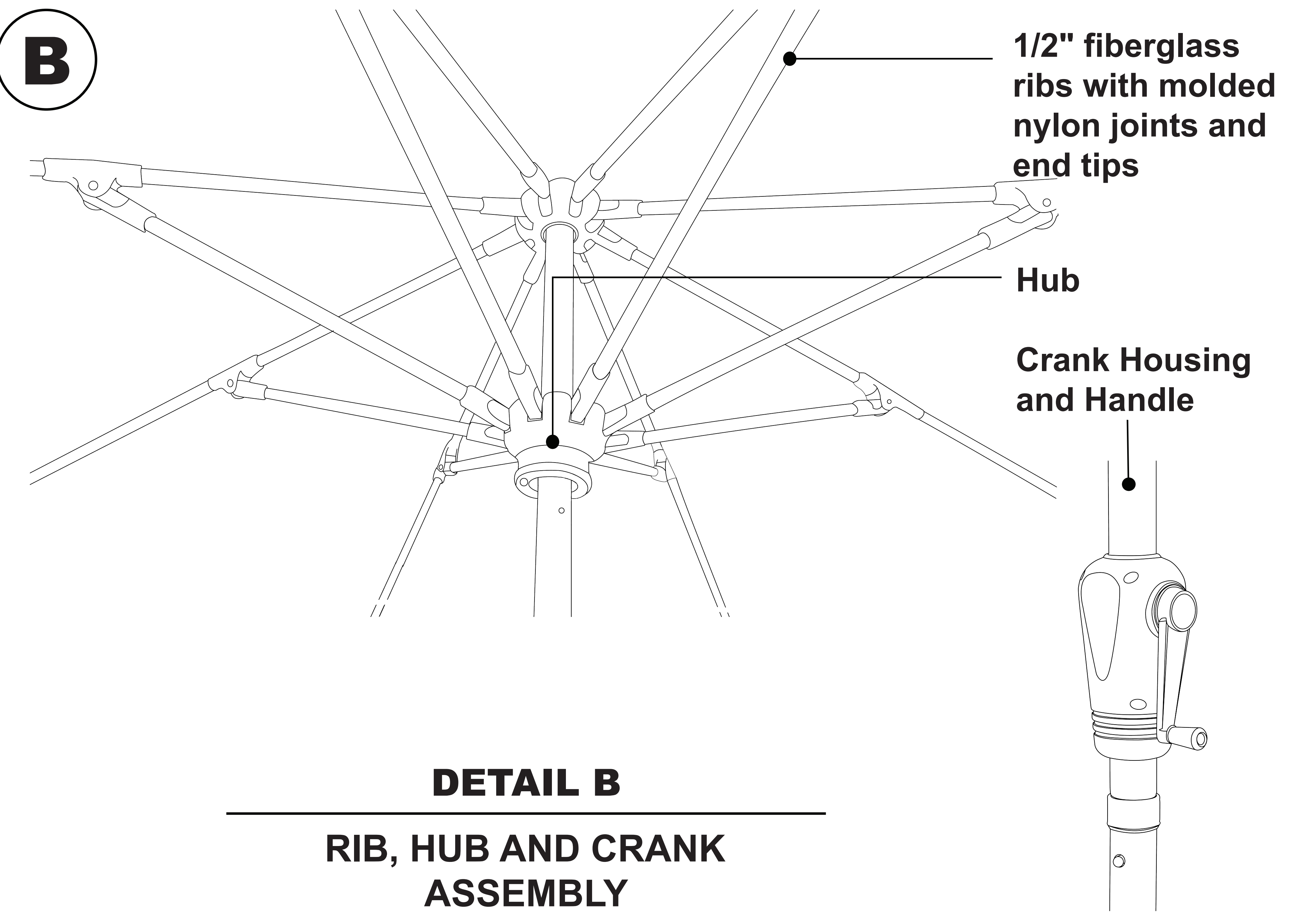


A



DETAIL A
INTERNAL VIEW
OF POLE CONSTRUCTION

B



DETAIL B
RIB, HUB AND CRANK
ASSEMBLY

GENERAL NOTES:

1. All Dimensions Are In Inches.

Available Sizes

7 1/2' oct with Crank Height: 90" Weight: 19 lbs	9' oct with Crank Height: 96" Weight: 22 lbs	7 1/2' oct with Push Up & Pin Height: 90" Weight: 16 lbs	9' oct with Push Up & Pin Height: 96" Weight: 22 lbs
--	--	--	--

MARKET COLLECTION
MODEL: MARKET CRANK OR PUSH UP
DRAWING DATE: 2026